

BAYSIDE HISTORICAL PRESERVATION SOCIETY

ANNUAL REPORT AND NEWSLETTER
WINTER, 2006



Photo by Tim Samway

PRESIDENT'S REPORT

BHPS was active in 2005. Some painting, landscaping, and furnishing of the upstairs bedroom continued the improvements in the museum. Postcards and stereopticon cards were sold, and so too was the 2005 Ten Year Anniversary Calendar (that project was prepared in 2004). As it has done in the past, the Society made a monetary contribution toward the band concert held in Ruggles Park for the Fourth of July activity. Later that month the Society sponsored the Molly Spotted Elk program. These things, and other Society activities, are discussed in reports and announcements in this newsletter, which I will let provide the details.

Looking ahead to summer 2006, the Society is planning several activities. One, not yet pinned down for a time and place, is a dramatic reading by Emily Wright, daughter of Patti and Steve Wright, a reenactment of a talk by Henry Wadsworth Longfellow's daughter Alice. Emily presented this program several times last year, once at the Longfellow house in Portland, and she has agreed to present it for Baysiders this year. Watch for notification about time and place.

Another program in summer 2006 comes to us through the efforts of Dick Brockway. (How often that has been said!) Dick, you know, is a model builder. His models of buildings and ships can be seen in

the Community Hall, around Bayside (many birdhouse models), and the Penobscot Marine Museum. His project this winter has been a model of the Community Hall, which, Dick tells us, has had many functions, not the least as a silent movie theater. In this newsletter is a picture of Dick's model of the Community Hall when it was the Bayside Theatre. Dick doesn't just build his models; he researches them, and in doing so for the Community Hall he has found the evidence of its use as a theater. To our good fortune, he has secured an agreement with the movie archive program in Bucksport to present a program in the Community Hall (nee Bayside Theatre) on Saturday evening, July 8. We will use that occasion for our annual meeting; our business formalities will be held to a minimum so we can hear about the history of silent movies in Bayside and even have a silent movie or two presented – with a piano player! Mark your calendar; this will be an unforgettable evening!

To be sure, the Society has other projects, long-term and on-going. When she was president, Beverly Crofoot secured from Janet Pattee's heirs glass plate negatives of photographs (and postcards) of Bayside and nearby areas. The BHPS Directors authorized reproductions from these negatives to be sold as a fund raising program for this year. Color photos are

available and will be sold for \$10 each (\$7.50 if more than one of the same photo is ordered). Order forms are available in the museum, and any of the directors will be happy to steer customers in the right direction. And as well, postcards and stereopticon cards from past years still are available. The museum will continue to be open every Sunday from 3-5 p.m. for this purpose as well as general enjoyment.

Finally, a note to all Northport Village Corporation residents and property owners. We invite you to be a member of BPHS. A membership form for that purpose is included in this newsletter. We are sending this newsletter to all NVC persons to show you what we do and to solicit your help and membership. Thank you.

Robert R. Sherman



51 Northport, Me.

*Dear Mother and all, I hope you are
doing well and enjoying your trip to
the mountains. I will see you soon.*

Postcard photo provided by
George Sholhamer



Photo by Deb Dougal

DIRECTORS' ACTIVITIES

In addition to Directors' activities mentioned in the President's and Vice-President's reports, several other Directors have specific activities intended to make BHPS more useful to members and Bayside residents.

Harold Hede is preparing a self-guided tour chart or booklet of Bayside, to include a map of the Historic District with locations of interest keyed to pages or a foldout. The keyed pages would have an historic photograph with a brief history. The proposed title of Harold's project is "Then and Now."

Pam Williams is organizing our membership list to include name, winter mailing address, winter phone, Bayside address, Bayside phone, and e-mail address. This should enable the Society and members to communicate more readily with each other. Pam also has volunteered to print and to mail the Newsletter—to members and to all residents of the Village Corporation.

Angela Cassidy edits the Newsletter and prepares it for printing.

BHPS Financial Report 2005

1. Balance Sheet as at:

| | <i>December 31, 2004</i> | <i>December 31, 2005</i> | <i>Difference</i> |
|--------------------------|--------------------------|--------------------------|-------------------|
| Total Assets on Hand | 17,493.83 | 17,621.78 | |
| Liabilities | 0 | 15.00 ⁱ | |
| Assets Minus Liabilities | 17,493.83 | 17,606.78 | |
| Fund balances: | | | |
| Cottage restoration Fund | 7,322.17 | 7,027.17 | |
| Media Preservation Fund | 989.00 | 0 | |
| General Fund | 9,182.66 | 10,579.61 | 1,396.95 |
| Total Fund Balances | 17,493.83 | 17,606.78 | |

2. Income & Expense Statement for 2005

General Fund

Income

| | |
|-------------------------|----------------------|
| Dues and Donations | 2,760.00 |
| Interest | 18.88 |
| Postcards and Calendars | 143.90 |
| Prior Year Income | 413.50 ⁱⁱ |
| Total income | 3,336.28 |

Expenses

| | |
|----------------------------------|----------------------------|
| Event Sponsorship | 400.00 |
| Insurance | 500.00 |
| Newsletter | 382.58 |
| Post Office Box | 100.00 |
| Utilities | 327.27 |
| Other Expenses | 229.48 ⁱⁱⁱ |
| Total expenses | 1,939.33 |
| Excess of Income of Expenses | 1,396.95 ^{iv} |

Other Expenses

| | |
|---------------------|----------------------|
| Cottage Restoration | 295.00 ^v |
| Media Preservation | 989.00 ^{vi} |

Notes to the Financial Statements

-
- ⁱ One member paid dues for two years. The \$15.00 dues payment for calendar year 2006 shows as a liability (unearned income) in this year's balance sheet.
 - ⁱⁱ This income came in during 2005 but really belongs to 2004.
 - ⁱⁱⁱ This item includes our filing fee, supplies, refreshments, and other miscellaneous costs.
 - ^{iv} This difference ties to the increase in the general fund in the balance sheet
 - ^v Money spent on our cottage and charged to the Cottage Restoration fund rather than the general fund.
 - ^{vi} This is money spent on media protection supplies and charged to the MBNA grant awarded to us for that purpose.

Additional Notes:

Late in 2004 Beverly Crofoot successfully applied for a grant from MBNA to continue the process of preserving our photographs and other media. These funds were spent in 2005 and these important parts of our collection are now better preserved for all to enjoy in the future.

Contributions:

From the beginning, Shady Grove, the BHPS museum cottage, has benefited from contributions, money and in-kind, from friends and members and the Bayside community. In 2005 contributions helped to improve the cottage with donated labor and expertise to landscape the grounds and paint the front and back steps and funds to provide a gravel walkway to the museum and to purchase period furnishings for the upstairs bedroom, among other things. Joe Reilly mentions these furnishings and contributors in his report herein. In addition, members and friends contribute money that enables necessary purchases. We cannot single out every contributor for thanks because many of them send contributions with their membership renewals that are recorded in a single category of "dues and contributions." But we can and do thank everyone here for their contributions large and small. Special thank you is given to the Northport Yacht Club, which contributed to BHPS in memory of Dan Webster, Sr. That contribution will be used to maintain the lovely landscaping that Ali and Lisa Webster did around the museum last summer.

COMMUNITY HALL MODEL

R. Brockway

I have always been fascinated by the construction of the community hall, especially the method used to frame and support the roof. It is evident that over the years some changes and additions have been made to the roof structure, and as a challenge, and to satisfy my personal curiosity, I have undertaken to construct a scale model of the building as it was originally constructed. The building was constructed about 1916 to serve as a theater for silent movies.

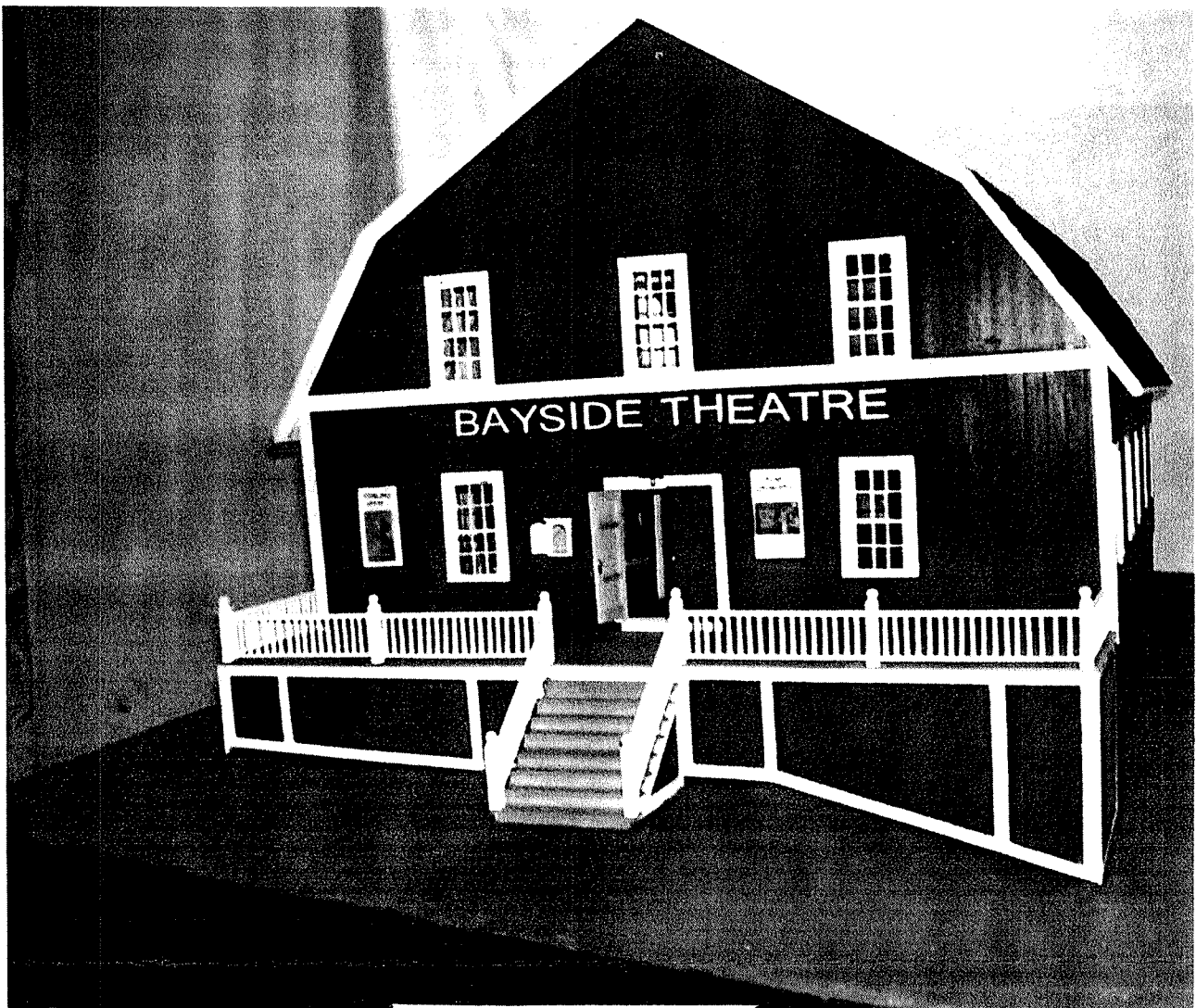
As I was studying the building construction I noticed some patterns and markings in the hardwood floor, as though some partitions that may have existed had been removed and the flooring patched. Upon further investigation (discussions with Bill Paige and Jo Huntoon) I came to understand that these markings were evidence of the projection booth and the booth for the ticket seller. I decided that this was too good to pass up, so I have included the booth constructions in the model; along with a scale model of the silent movie projector and light source.

While researching the early film projectors I came across an interesting web site for Northeast Historic Films (www.oldfilm.org) who are located in the old Alamo Theater in Bucksport. In conversations with them, they have agreed to provide an evening presentation of a silent movie, complete with piano and piano player, at the Bayside Theatre on Saturday July 8, 2006. I am sure you will hear more about this as the date draws near.

So talk it up, tell your friends, and come to the movies. Be prepared to applaud the heroes and to boo the villains.

An extract from B. Webster's oral history (thanks to Beverly Crofoot):

When I was about 8 or 9 years old, (she was born in 1908, so this would be c. 1916) what is now the Community Hall was built as a moving picture theater. The films were silent, of course, but we had Mary Louise Smith's mother who played the piano with great gusto and I guess considerable talent. She seemed to have a faculty for sweeping the audience up into the moods of the picture by her changes of tune and tempo. She would reach a tumultuous crescendo in some moments of great excitement, and the dogs and the cats that had followed their owners into the show would either howl or get up and quietly leave the premises. I even remember C. O. Dickie's guinea hens wandering in one evening for the performance. Freddie Condon had opened a tiny candy shop next to the movie house, and before the show was half over the floor was strewn with buttered popcorn, candied chicken feed, and peanuts, a veritable feast for our four-legged friends. The first movie I remember seeing there was All Nazimova (1879-1945) in "Fog", a true tear-jerker.



Vice President's Report

By Joe Reilly

It's been an exciting last two summers at the Bayside Historical Society's Shady Grove Cottage Museum. The directors of the Society decided that the first floor of the cottage would be a changing display space while the second floor would become a "period" bedroom. That "period" is the time from 1890 to around 1910. The directors also named me as "curator".

After Rob Sherman and Dick Brockway finished their renovations on the structure and a corps of volunteers headed by Marg Brockway and Beverly Crofoot painted the first floor of the cottage, we were ready to start exhibiting some of the artifacts that have been donated and that we have acquired for the society. Harry Rosenblum lent us a large lighted floor display case (one of Bob Rich's) for as long as we needed. Some think Harry just needed a place to store that big case! Thanks to the achieving of Beverly Crofoot, the society has

amassed a large collection of photos and paperwork relating to the Wesleyan Grove Campground and the Village of Bayside.

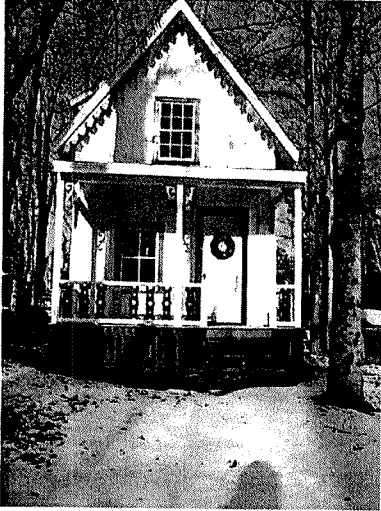
The first year, we concentrated on the downstairs displays. Donations came in from so many community members. Here are some of the donations. Street signs and cottage signs were donated by Bill Paige, the Reilly's, The Brockway's and Blair and Beanie Einstein. Clothing was donated by Betty Wilson, Beverly Crofoot and Sue Fleming. Penny Matthews, daughter of long time Bayside resident Janet Pattee, donated a large collection of glass plate negatives to the society. We have reproduced all of these photos and they are available upon request. Harry Rosenblum lent us his extensive collection of Northport/Bayside antique china. We were able to display the beautifully crafted work of Dick Brockway. His model of the Eastern Steamship Belfast graced our museum before it moved to its new home at the Penobscot Marine Museum. Dick has also made superb models of his cottage and the tabernacle for the society. Building pieces were given by John Dykstra and Blair Einstein. That first year we also received a bible given by Lydia Gnutti. We were also lucky enough to be able to display a series of large format photographs taken by former Bayside resident and mother of Milo, Margo Balboni. These photos were of Bayside cottage interiors. Janae Novatny and Dale Sprock donated a cottage style drop front desk our income producing sales of postcards and stereoview sets continued throughout the summer. We also produced a Historic Bayside Calendar that was on sale at the museum.

Last year, we started to set up the second floor of the museum. The cornerstone of the bedroom is a hand painted cottage style bed donated by George Scholhamer. The ancient mattress is covered by a period quilt. There is also a folding child's crib. The Malone's have lent a number of furniture pieces that are placed on the second floor. The Scholhamer's have also let us root through their garage and take a number of kitchen items and a "Mystery" object that was on display last summer. Peg and Ed Lovejoy continue to provide advice and unique objects to us. Rob Sherman and I have bought a few items at sales that fit our "furnishing" of the cottage. Although not yet finished, the upstairs will consist of a bedroom fit for a camp meeting member and some storage/office space for the society. We are all excited by the steady progress of our little museum.

We continue to look for artifacts from the early years of our community. As cottages are remodeled, there are always things that turn up. Last year we were able to get wall boards with names and drawings from 1880 to 1915 that appeared during reconstruction. Now I know that I have probably left someone out from the many donations that we received. The good news is that if you come down to the Museum all donations are marked with the donor's name!

VISITORS CROWD INTO MUSEUM

Photo by Beverly Crofoot



Shady Grove, the BHPS museum cottage was busy in the summer of 2005. In July and August nearly 100 visitors (some of them repeated visitors) signed the museum guest book and enjoyed the displays and reading materials downstairs and the in-progress old-time bedroom being fashioned upstairs. Some of the visitors, of course, were Bayside residents and BHPS members. Others were friends and the curious who meandered down Pleasant Street to see the museum either for the first time or its progress over the three years of its life. BHPS members hosted open-house of the museum every Sunday afternoon. Visitors who signed the guest book were from all over the country: Worcester, MA; Exeter, NH; Knoxville, TN; High Springs, FL; Atlanta, GA; Kingstown, RI; San Carlos, CA; East Grady, CT; State College, PA; Ellicott City, MD; Randolph, VT; from all over Maine; and many other places in those and other states. They found the museum, as one said, "It's awesome." Several BHPS members know the secret of the "hidden key" and gave visitors individual tours of the museum on days other than Sundays. Visits to the museum continued, sporadically, throughout September (when many Baysiders have left) and into October as late as Columbus Day weekend. With such success, BHPS will continue its open-house days in 2006 and invite members and the public to enjoy the museum. Bring family and friends. We'll see you there!